

Installation Manual

Introduction:

With variety of different tin roof brackets, metal roof solar mounting system can meet trapezoid/corrugated metal roof and standing seam roof demand with or without penetrating on the roof.

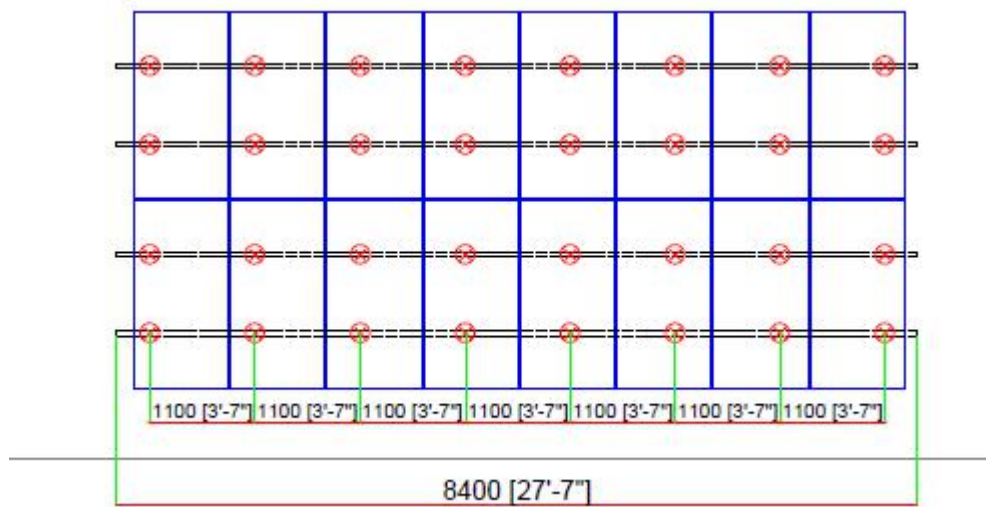


Normal metal roof mounting accessories shown as bellow:

Rail	L-feet kit	End clamp kit	Mid clamp kit
			

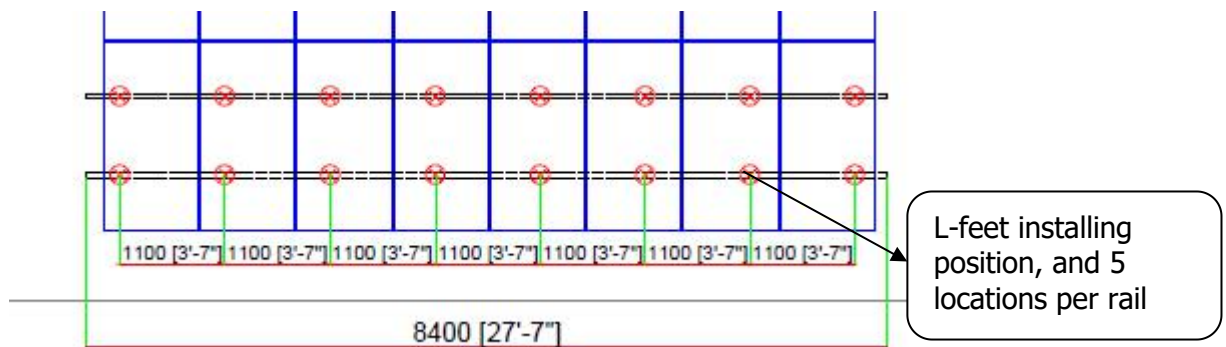
IF Roof material: concrete foundation, so we need to choose expansion bolt to instead of tapping screw.

Step1 Check drawing:



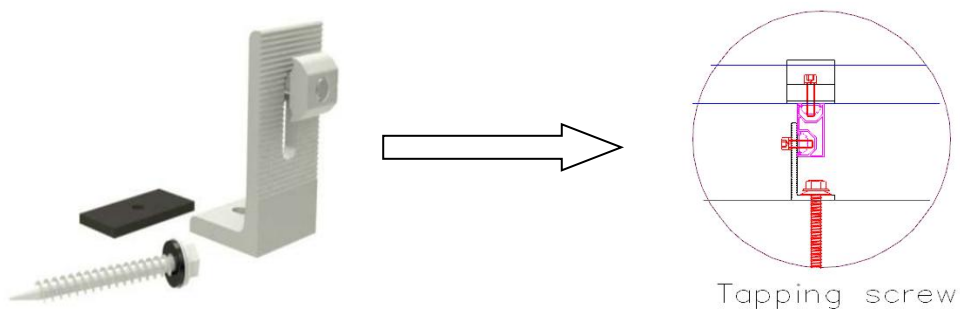
and here we show the front row which tied upon metal roof how to install as example at first:

PV Plan: 8*1 as bellow

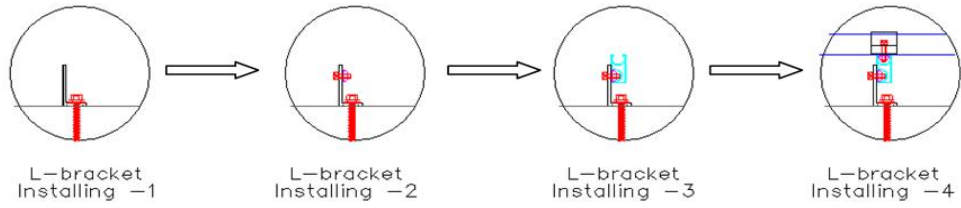


Mounting rail length: 8400mm=2100mm*4 to connect

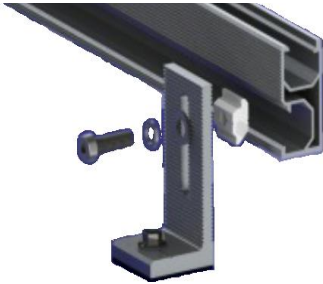
Step2:Installing L-feet by expansion bolt up on metal roof.



Here we can see as bellow:



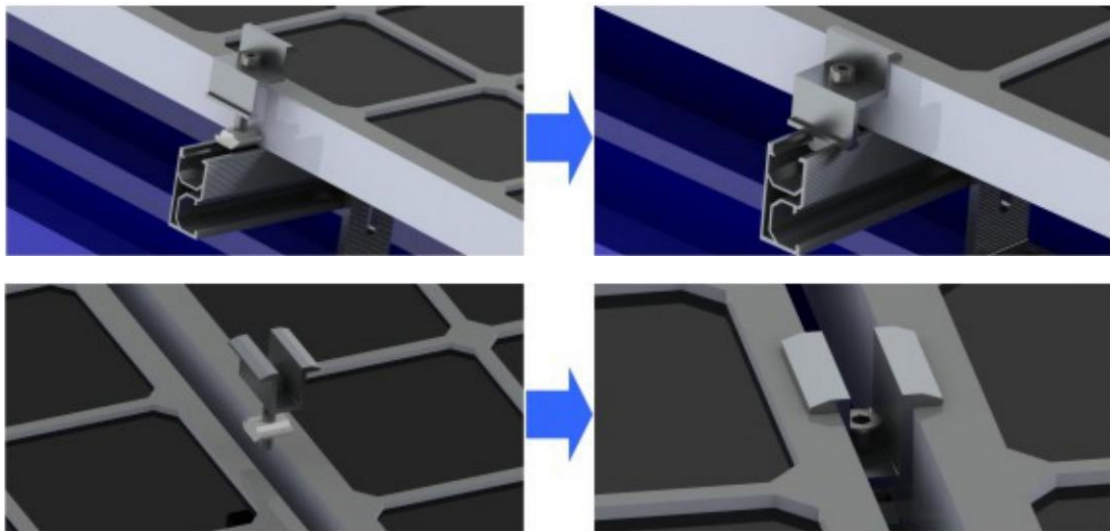
Step3: Installing Mounting rail by the side of L-foot kit as bellow:



Use rail splice kit to connect each 2 mounting rails:



Step4: Installing PV panel by End clamp and mid clamp.



Make sure all parts fixed steady. End.

We are very apperciated that you can choose our products, and anything confused, please let us know without hesitate.